

MONTHLY MEMBERSHIP PROGRESS REPORT

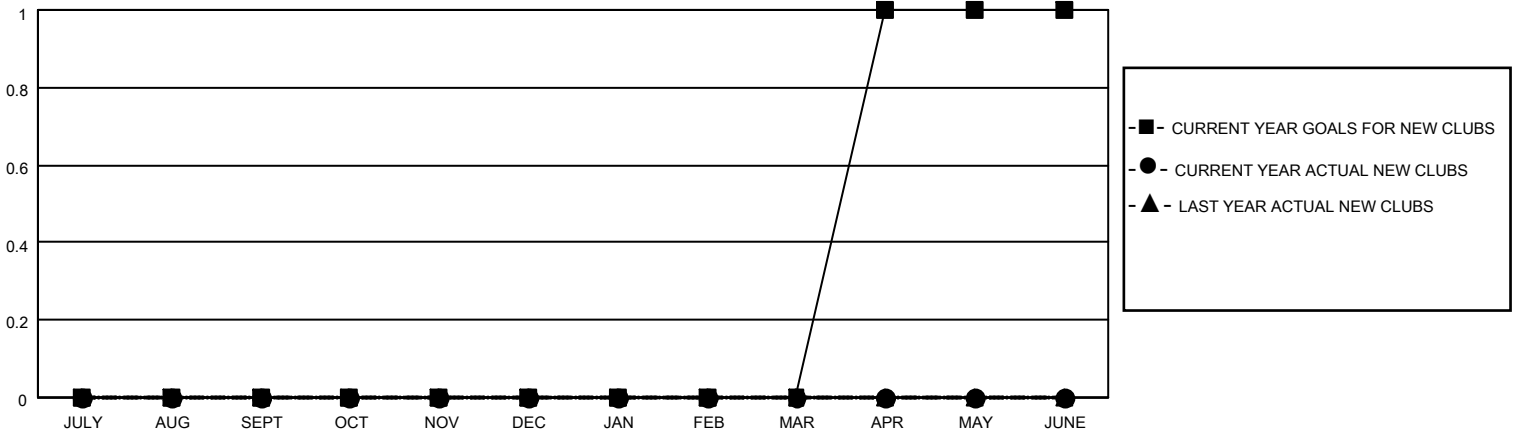
LOCATION NEW ZEALAND

District 202 J

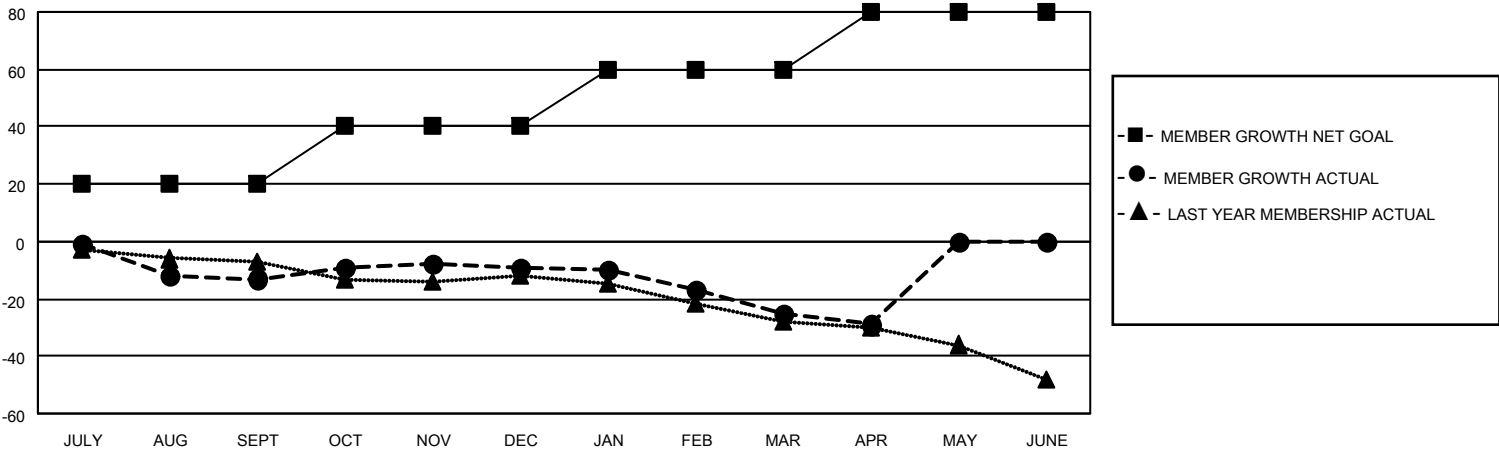
Results as of: 4/30/2022

Clubs				Members			
RESULTS FOR 2021-2022				RESULTS FOR 2021-2022			
QUARTER	NEW CLUB GOAL	NEW CLUBS	DROPPED CLUBS	QUARTER	MEMBER GROWTH NET GOAL	MEMBER GROWTH ACTUAL	DROPPED MEMBERS ACTUAL (including transfers)
JULY/AUG/SEPT	0	0	0	JULY/AUG/SEPT	20	17	28
OCT/NOV/DEC	0	0	0	OCT/NOV/DEC	20	27	20
JAN/FEB/MAR	0	0	0	JAN/FEB/MAR	20	10	24
APR/MAY/JUNE	1	0	0	APR/MAY/JUNE	20	0	4

GOALS AND ACTUAL NEW CLUBS CUMULATIVE



GOALS AND ACTUAL MEMBERS CUMULATIVE



<p>DROPPED CLUBS: 0</p>	<p>19 CLUBS OF 33 ADDED 1 OR MORE NEW MEMBERS</p>	<p style="text-align: center;"><u>GENDER DISTRIBUTION</u></p> <p>MALE 882 (74.75%) FEMALE 298 (25.25%) NON BINARY 0 (0.00%) PREFER NOT TO ANSWER 0 (0.00%)</p>
<p><u>DROPPED MEMBERS</u></p> <p>DECEASED 24 CLUB CANCELLED 0 OTHER 52 TOTAL 76</p>	<p style="text-align: center;">CLICK HERE FOR CUMULATIVE MEMBERSHIP DATA</p>	<p>TOTAL FAMILY UNIT MEMBERS 46 FAMILY MEMBERS PAYING HALF DUES 23</p>